

Smart Lighting Control

DK1M Lighting Control Kit

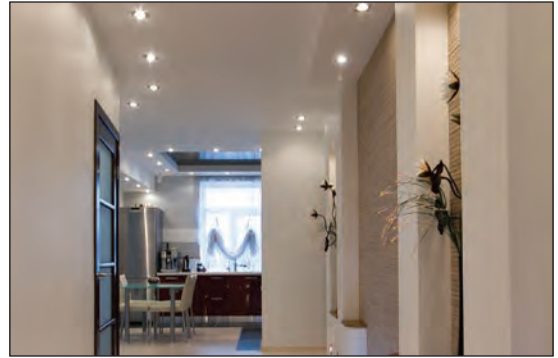
Everything about this 'out-of-the-box' solution just looks and feels right. Simplicity is at the forefront of its design, making it so easy to install. With no special knowledge required, boxes can be linked together to create additional channels e.g. 5-8, 9-12.

THE KIT CONSISTS OF:

- MDP4x600+3AR Dimming Pack
- 7WC 4S+4C Hartland CFX® Colours mechanical button wall plate

SYSTEM FEATURES:

- Simple to program scene setting
- Compatible with LED lamps*
- Expandable system beyond lighting control e.g audio, blinds, extractor fans



TECHNICAL INFORMATION:

Ratings:	220/240Vac 50/60Hz
Power Output:	600 watts per circuit/150 LED 1 x 3A Relay
Loads:	Resistive LV with selected electronic transformers Selected LEDs*
No. of Channels:	4 Dim + 1 Non-Dim
Environment:	-10°C to 45°C 90% humidity non-condensing
Dimensions:	457mm x 205mm x 78mm
Standard / Approval:	EN60669-2-1
Wiring Control:	CAT 5/6 UTP cable (unscreened 4x twisted pairs) OR CAT 5/6 STP cable (screened 4x twisted pairs) OR SELV supply (<15Vdc) (To control outstations or plates) OR Belden 1502R

IN THE BOX;

MDP4X600+3AR Dimming Pack

- Outputs protected by MCBs and a mains switch disconnecter.
- Soft start feature - extends lamp life.
- Not reliant on manufacturer's commissioning.
- Individual circuit control



7WC 4S+4C Hartland CFX® Colours mechanical button wall plate

- Internal memory
- 8 Button Mechanical Plate



Hartland CFX® Colours

Code	DK1M Kit
7WC DKIM	MDP4X600+3AR Dimmer Pack 7WC 4S+4C Hartland CFX® Colours

For LED compatibility Hamilton recommends:

*De-rate dimmers by 75% eg. 600Watt dimmer = 150W LED

Due to the different design and component variations we recommend that when dimming mains (GU10) type LEDs compatibility is sought between dimmer and lamp prior to purchase and installation.

For more information contact our technical support.

Smart Lighting Control

DK1ME Lighting Control Kit - built in ethernet

Everything about this 'out-of-the-box' solution just looks and feels right. Simplicity is at the forefront of its design, making it so easy to install. With no special knowledge required, boxes can be linked together to create additional channels e.g 5-8, 9-12.

THE KIT CONSISTS OF:

- MDP4x600+3AR+E Dimming Pack
- 7WC 4S+4C Hartland CFX® Colours mechanical button wall plate



SYSTEM FEATURES:

- Simple to program scene setting
- Compatible with LED lamps*
- Expandable system beyond lighting control e.g audio, blinds, extractor fans
- Wireless control from smart phone or tablet via the Hamilton app

Code	Remote Dimmer Packs
DK1ME Kit	7WCDKIME MDP4X600+3AR Dimmer Pack 7WC 4S+4C Hartland CFX® Colours

TECHNICAL INFORMATION:

Ratings:	220/240Vac 50/60Hz
Power Output:	600 watts per circuit/150 LED 1 x 3A Relay
Loads:	Resistive LV with selected electronic transformers Selected LEDs*
No. of Channels:	4 Dim + 1 Non Dim
Environment:	-10°C to 45°C 90% humidity non-condensing
Dimensions:	457mm x 205mm x 78mm
Standard / Approval:	EN60669-2-1

Wiring: CAT 5/6 UTP cable (unscreened 4x twisted pairs) OR CAT 5/6 STP cable (screened 4x twisted pairs) OR SELV supply (<15Vdc) (To control outstations or plates) OR Belden 1502R

IN THE BOX;



Wireless connection TO App via home router

Home Hub Router

MDP4X600+3AR+E Dimming Pack

- Outputs protected by MCBs and a mains switch disconnector.
- Soft start feature - extends lamp life.
- Not reliant on manufacturer's commissioning.
- Individual circuit control



7WC 4S+4C Hartland CFX® Colours mechanical button wall plate

- 8 Button Mechanical plate
- Internal memory



Hartland CFX® Colours



Apple and the Apple logo are trademarks of Apple Inc., registered in the U.S. and other countries. App Store is a service mark of Apple Inc., registered in the U.S. and other countries. Google Play and the Google Play logo are trademarks of Google Inc.

For LED compatibility Hamilton recommends:

*De-rate dimmers by 75% e.g. 600Watt dimmer = 150W LED

Due to the different design and component variations we recommend that when dimming mains (GU10) type LEDs compatibility is sought between dimmer and lamp prior to purchase and installation.

For more information contact our technical support.