



Fiona Maclean



A modern romance: Hotel Indigo Bath falls in love with Hamilton wiring accessories.

case study

HOTEL INDIGO® BATH



Photo: Hotel Indigo Bath

■ Just a stone's throw from the vibrant city centre, Hotel Indigo Bath provides a unique stay in the historic Somerset location famed for culture, architecture, literature, and romance. Set in a stunning Grade One listed Georgian terrace, the hotel features 166 bedrooms, of which no two rooms are the same.

As with all Hotel Indigo venues, the boutique hotel has been renovated to reflect the charm and character of its local surroundings. Mixing contemporary design with a traditional 18th Century twist, the Georgian building caters for all the requirements of a modern guest while telling the historic story of the city's architectural and literary influences.

The guest rooms at Hotel Indigo Bath have one of five different design themes: Romance and Mischief, Architectural Beauty, Literary Hideaway, Garden Rooms, and The Vault Rooms.

The Romance and Mischief rooms look back to the famous Debutante Season in Bath and the afternoon teas and grand balls that inspired literary depictions of the city. These rooms put a modern and abstract twist on the era's romantic promises and frivolity, but also draw attention to the mischievous gambling culture that was commonplace in Georgian society.

The Architectural Beauty Rooms accentuate the building's period features and reflect the city's stunning architecture. The rooms benefit from high ceilings and walls lined with ornate ceiling sconce covers that revive the elegance of the Georgian period.

Bath influenced the writings of Jane Austen, Charles Dickens, and Mary Shelley, amongst many others, and the Literary Hideaway Rooms feature décor inspired by novels and a traditional writer's bureau that provides the perfect spot for guests to lose themselves in a book, or be inspired to write their own story.

Within a newly built extension, the Garden Rooms overlook the hotel's garden terrace, bringing the outside view indoors with light and airy nature-inspired design, while incorporating modern features to create a warm and comfortable environment.

And finally, the Vault Rooms are set within the building's 18th Century vaults. The vaulted Bath stone ceilings and traditional black timber finishes are softened with delicate lighting and underfloor heating to create cosy and atmospheric guest suites.



■ The Brief

To support its thorough refurbishment, Hotel Indigo Bath sought a decorative range of wiring accessories that offered modern conveniences and services to its guests, but would be sympathetic to the building's period features. To be installed within all 166 guest rooms for continuity, the wiring accessories also needed to complement all five design themes.

■ The Solution

Hamilton Litestat was the supplier chosen with its popular Hartland CFX® plate selected in Antique Brass with Black inserts to equip all of the guest rooms.

The Hartland CFX® plate has a sophisticated, contemporary design with soft edges and a screwless faceplate thanks to Hamilton's patented four-point clipping system that conceals the fixings. While elegant in appearance, the design is also robust, making it suited to the high demands



Veerle Evens



Veerle Evens



Veerle Evens

of the hotel industry. The choice of Antique Brass finish gives the contemporary design a classic flair and reflects the traditional-

meets-contemporary décor scheme that permeates the Hotel Indigo Bath.

At the main entrance to each guest room, a Grid Fix 4-Gang plate controls the master light switch, bathroom light and features two LEDIT-B100 rotary dimmers for softer lighting options.

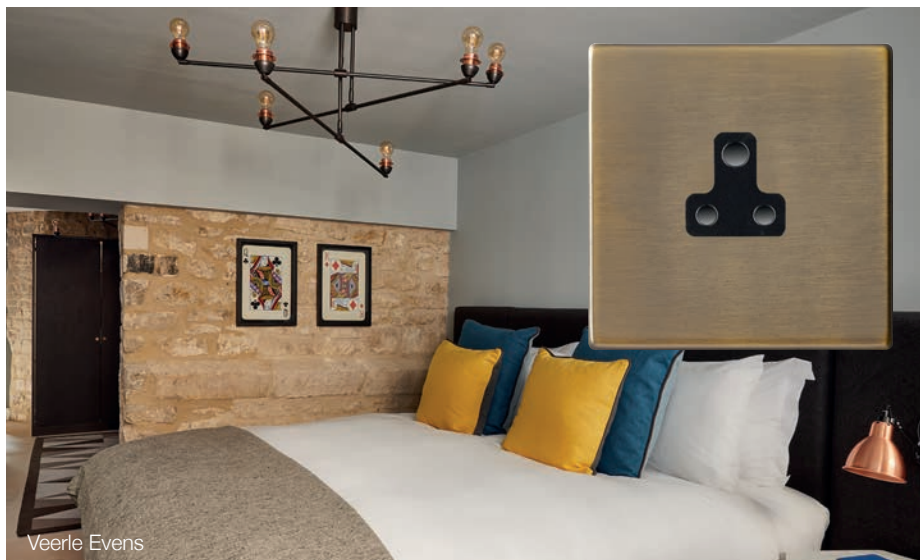
Beside each bed, dual switched sockets are equipped with two 2.4A USB Ultra charging outlets to provide easy and accessible charging functionality for smart devices, a modern convenience expected by today's guests. Positioned alongside is a 2-Gang 2-Way Rocker Switch plate to control the bedside lighting.

In the same Hartland CFX® design with distinguished Antique Brass finish, power is distributed throughout the rooms with 1-Gang and 2-Gang Switched Sockets. Meanwhile, in the larger suites these are supported by a 4-Gang Aperture Sheer Floor Plate housing dual USB charging outlets and an Unswitched Socket to provide further charging capability.

■ The Result

The Hamilton wiring accessories within Hotel Indigo Bath complement the boutique hotel's refined décor that blends traditional with contemporary design and modern convenience. The wiring accessories are in-keeping with the architecture while also providing robust and innovative functionality.

Nicola Fender, Manager at Hotel Indigo Bath, says: "The rooms look stunning, with the wiring accessories fitting our décor and functionality requirements perfectly. The design of the switch plates and sockets delivers the exact look needed, and provides a robust finish that will cope with the wear and tear anticipated of a hotel environment. The finished setting is a delightful place to relax, and the process



of specification, ordering and delivery was smooth and seamless despite dealing with lockdown restrictions as a result of

COVID-19. We couldn't be happier, and we look forward to welcoming the many guests that will appreciate these fitting features."

■ Products installed

Control Plates: Hartland CFX® Collection –

All mounted on Single/Double Antique Brass plates with Antique Brass switches and Black inserts.
Plates installed include:

79CSS2USBULTAB-B	– 2 Gang 13A Double Pole Switched Socket with 2 USB Ultra Outlets 2x2.4A	79C4GP	– 4 Gang Grid Fix Aperture Plate
79CR22AB-B	– 2 gang 10AX 2 Way Rocker	LEDITB100	– LEDIT B100 2-Way Dimmer Module
		IR21AB-B	– 10AX 2-Way Rocker Module

about
Hamilton
Visit www.hamilton-litestat.com

Hamilton Litestat is a British electrical solutions provider that designs, develops and manufactures innovative electrical accessories of the highest quality. With a vast product range spanning decorative switch plates and sockets, smart lighting control and wireless audio, it is a one-stop-shop for all wiring requirements for both the residential and hotel industries.

A family-owned and run company, Hamilton celebrated a fantastic milestone in 2018 when the business reached its 50th anniversary. It operates under the direction of Ian Hamilton and has grown since its inception to employ 120 customer-focused staff and distribute its class-leading solutions around the world.

Hamilton's outstanding reputation is built on delivering quality, both in terms of design and manufacture. It supplies the latest technology and 'smart' solutions, all supported by exceptional customer service. As an industry-leading company, Hamilton is ceaseless in its quest to produce pioneering solutions that are easy to install, competitively priced and have a stylish, desirable finish suited to any interior project.



For more information visit www.hamilton-litestat.com
info@hamilton-litestat.com | +44 (0)1747 860088 | [f](#) [t](#) [p](#) [i](#) [n](#)



INDUSTRY PARTNER